



Static In-Line Timer

**Product Description**

These timing units are designed to be operated in series with dc contactor and/or relays coils to give acceleration timing. They are sized to handle coil current for up to a Size 8 contactor directly without need for interface relays. Timing begins when the input to the device is energized (Type E). The delay will occur with “make.” Delay on “break” is not available.

These units are available with NO or NC contacts. They are completely solid-state so there are no moving parts to arc or fail.

**Technical Data and Specifications**

- Voltage: 230 Vdc.
- Timing Range: 0.05 to 180 seconds.
- Operation: Electronic.
- Output Current:
  - .75 ampere, steady state
  - 10 ampere inrush
  - 5 mA minimum
- Voltage Drop: 2.5V @ 1 ampere.
- Operating Temperature: -40 – 80°C.
- Storage Temperature: -40 – 85°C.
- Humidity: 95% relative.
- Mounting: Surface mount.
- Terminations:
  - 1/4" male quick connect terminals

**Dimensions**

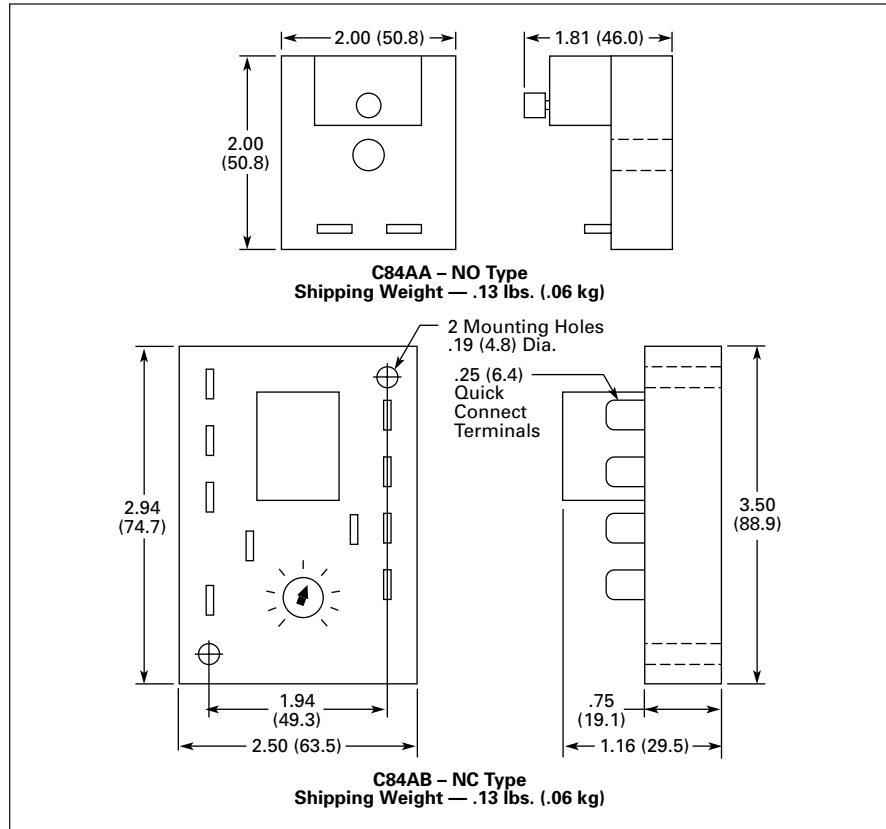


Figure 29. Approximate Dimensions in Inches (mm) and Shipping Weights

**Wiring Diagrams**

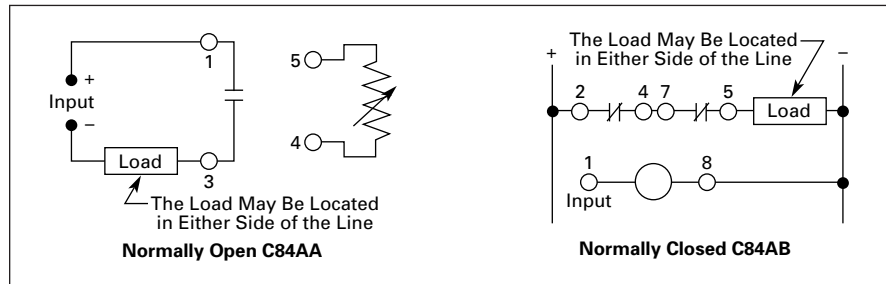


Figure 30. Wiring Diagrams

**Product Selection**

**When Ordering Specify**

- Complete Catalog Number.

Table 114. Type C84 Static In-Line Timers

Timing Range	Catalog Number	*
<b>NO Type, Adjustable Range</b>		
.05 to 3.0 Seconds	C84AA003	
.5 to 60 Seconds	C84AA060	
2.0 to 180 Seconds	C84AA180	
<b>NC Type, Adjustable Range</b>		
.1 to 5.0 Seconds	C84AB005	

Discount Symbol ..... 18CD-4  
\* Consult Sales Office for Pricing