

## RENEWAL PARTS AND INSTRUCTION PUBLICATION FOR 75, 90, 110, AND 160KW 3 POLE AC CONTACTORS

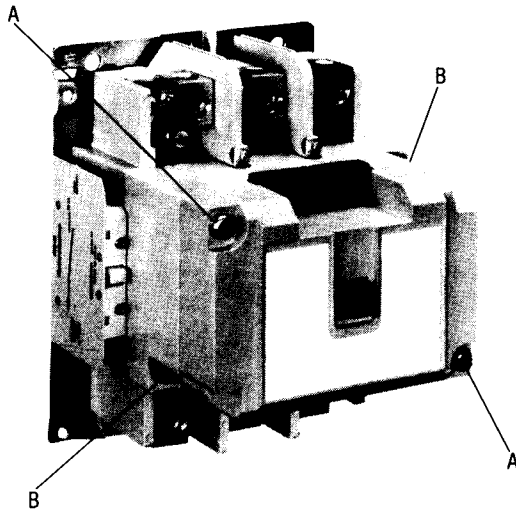


FIGURE 1

### INTRODUCTION

This publication is designed to simplify inspection and maintenance through the use of photographs and detail views for easy identification of parts. Illustrated steps on assembly and disassembly are shown. This information should be read carefully.

### DESCRIPTION

This publication covers 3 pole, 3 phase non-reversing contactors with ratings as shown on the nameplates.

### CARE

These contactors require no mechanical maintenance. Maintenance required can be performed with an electrician's screwdriver. For continued uninterrupted performance, renew all of the power contacts and springs at the same time before the contact tip material has worn away.

When renewing the contacts, check all terminal screws to insure they are tight and secure.

Suggestion—Refer to publication 14183 for helpful information on inspecting and determining when to replace contacts.

**NOTE**—Disconnect power before any functions are performed on this contactor.

### RENEWAL OF OPERATING COIL (Figure 1)

The operating coil is epoxy encapsulated and so constructed to provide long service life. Should the coil require changing, the entire operation can be performed in a few minutes.

**Caution**—If the device has been in service, many parts may still be thermally hot.

1. Disconnect all power to the contactor.
2. Unfasten the two pan head cover screws "A" and remove the cover, Item 22, Page 3.
3. Unfasten the four pan head screws securing the clamp, Item 21, and the armature, Item 18. Remove the clamp and the armature.
4. Pull the coil straight out.
5. Install the new coil with the coil terminal blades engaging the coil terminal clips.
6. Install the armature (narrow end to the left) into its seated operating position.
7. Install the clamp and secure the screws.
8. Install the cover.

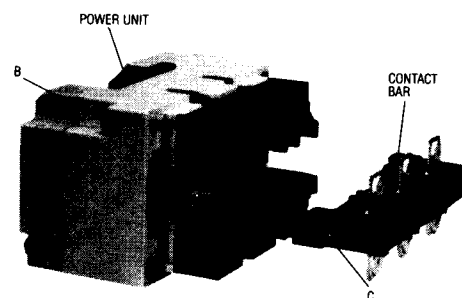


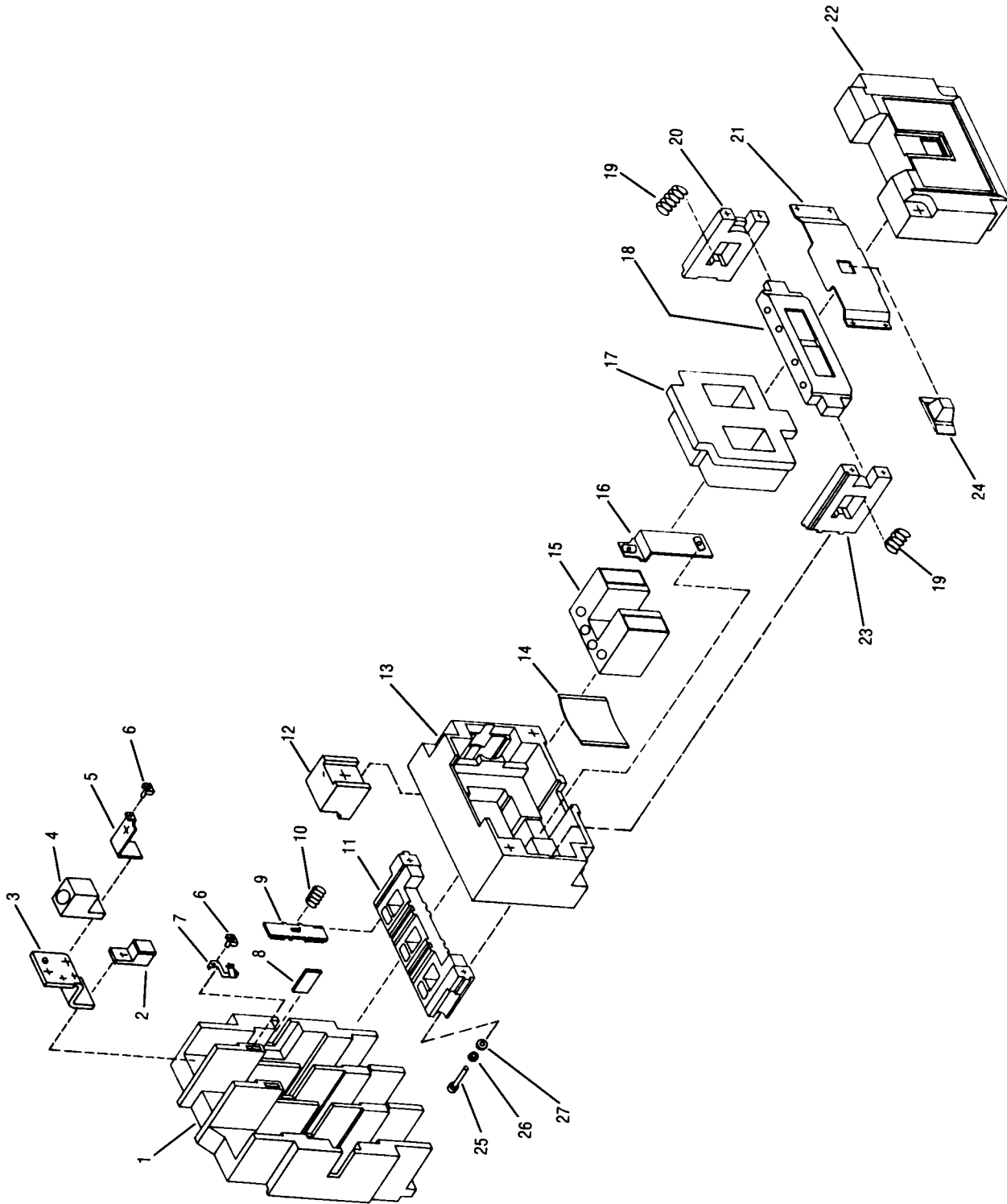
FIGURE 2

### RENEWAL OF POWER CONTACTS (Figure 2)

The power contacts, when used within their rating, will provide long trouble-free life. They should not be filed or dressed.

**Caution**—If the device has been in service, many parts may still be thermally hot.

1. Disconnect all power to the contactor.
2. Loosen the two gold-colored slotted hex head screws "B" and pull out the Power Unit. (Continued on Page 4)



**RENEWAL PARTS – Information Required**

To insure prompt handling of renewal parts orders, please include the following:  
**DESCRIPTION, PART NUMBER, AND QUANTITY REQUIRED**

**PARTS LIST**

Item No.	Description	Part No.	Quantity			
			75KW	90KW	110KW	160KW
1	Molded Base	17-18965	1	1	1	1
2	Stationary Contact (included with Item 28)	—	6	6	6	6
3	Terminal Plate	80-6168	6	6	6	6
	Mounting Adapters (not shown)					
	75-90KW Contactors	80-4072	6	6	—	—
	110-160KW Contactors	80-6114	—	—	6	6
	10-32 x .438 Flat Head Sems Screw	11-2390	36	36	36	36
4	Power Lug (not provided)	—	—	—	—	—
5	Control Terminal (not provided)	—	—	—	—	—
6	Terminal Clamp	55-1743	2	2	2	2
7	Coil Terminal Clip	80-2747	2	2	2	2
8	Insulator	56-6504	1	1	1	1
9	Movable Contact and Retainer (included with Item 28)	—	3	3	3	3
10	Contact Spring (included with Item 28)	—	3	3	3	3
11	Contact Bar	23-3542	1	1	1	1
12	Arc Chute	62-531	6	6	6	6
13	Magnet Housing	49-6742-2	11	1	1	1
14	Spring	69-2770	1	1	1	1
15	Magnet Frame	48-1030***	1	1	1	1
16	Plate	19-1570	1	1	1	1
17	Magnet Coil (see Page 4)	**	1	1	1	1
18	Armature Assembly	48-1029-2***	1	1	1	1
19	Return Spring	69-2554	2	2	2	2
20	Push Bar (Right-Hand)	61-1606	1	1	1	1
21	Bracket	79-17426	1	1	1	1
22	Cover Assembly	49-6787-2	1	1	1	1
23	Push Bar (Left-Hand)	61-1612	1	1	1	1
24	Indicator	53-3050	1	1	1	1
25	10-32 x .938 Pan Head Screw	11-3107	4	4	4	4
26	No. 10 Lockwasher	916-484Z	4	4	4	4
27	No. 10 Flatwasher	916-166	4	4	4	4
28	Renewal Contact Kit (includes Items 2, 9, 10, and mounting hardware)	**				
	75KW Contactor	6-293	1	—	—	—
	90 KW Contactor	6-294	—	1	—	—
	110KW Contactor	6-288	—	—	1	—
	160KW Contactor	6-286	—	—	—	1

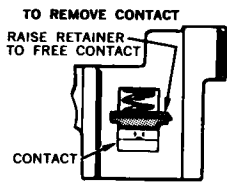
\*\* Recommended Spare Parts

\*\*\* It is recommended that Items 15 and 18 be replaced together.

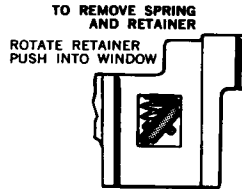
(Continued from Page 1)

**MOVABLE CONTACTS**

1. Remove the contact bar, Item 11, by removing the two screws and washers, Items 25, 26, and 27.
2. Refer to sketch "A". Raise the contact retainer, Item 9, against the spring to free the contact so it can drop out.

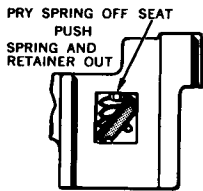


SKETCH "A"

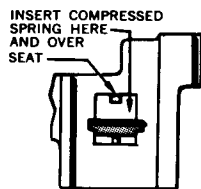


SKETCH "B"

3. Refer to sketches "B" and "C". Rotate the retainer into the position shown and push it into the window to hold it. Lift the spring off the seat with a small screwdriver. Push the spring and retainer through the window.



SKETCH "C"



SKETCH "D"

4. Refer to sketch "D". Place and hold the retainer in the position as shown.
5. Compress the spring with the thumb and index finger and insert and seat in the cavity above the retainer.
6. Raise the retainer against the spring, insert and position the contact. Contact tips must face away from the retainer.
7. Install the contact bar to the push bars, Item 20 and 23, with screws and washers.

Note: The contact bar is not reversible. Match the ends of the contact bar to fit inside the raised projections on the push bars.

**STATIONARY CONTACTS**

NOTE: It is not necessary to disconnect any wiring.

8. Remove screws and old stationary contacts.
9. Install the new stationary contacts and screws.

**LUBRICATION**

Do not lubricate any part of this equipment.

**AUXILIARY CONTACTS**

Are renewable as a complete assembly only. See tables for auxiliary contacts.

**ARC CHUTES**

These seldom require renewal. Some burning and discoloration is normal. When the contacts are renewed, brush out any loose accumulations.

**ACCESSORIES  
AUXILIARY CONTACTS, TERMINAL BLOCK,  
AND TRANSIENT SUPPRESSOR**

**AUXILIARY CONTACTS  
BASE MOUNTED**

Circuit	Catalog No.
1 N.O.	C320KGS41
1 N.O. - 1 N.C.	C320KGS42

**AUXILIARY CONTACTS  
FOR MOUNTING ABOVE BASE MOUNTED INTERLOCK**

Circuit	Catalog No.
1 N.O.	C320KGS20
1 N.C.	C320KGS21
1 N.O. - 1 N.C.	C320KGS22

**TRANSIENT SUPPRESSOR**

Catalog No.
C320AS1

**TERMINAL BLOCK**

Catalog No.
C320TB2

**OPERATING COILS**

Volts	HZ	Part No.	Volts	HZ	Part No.
120	60	9-1891-1	380	50	9-1891-14
110	50				
240	60	9-1891-2	24	60	9-1891-15
220	50				
480	60	9-1891-3	240	50	9-1891-20
440	50				
600	60	9-1891-4	415	50	9-1891-21
550	50				
208	60	9-1891-13	277	60	9-1891-26