

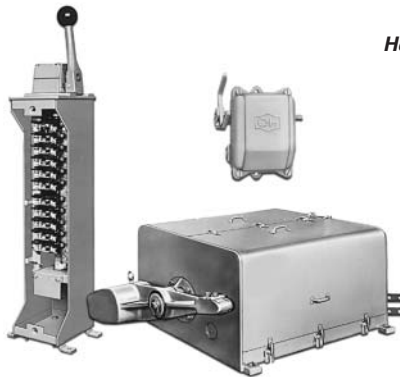
Crane Control

Contents

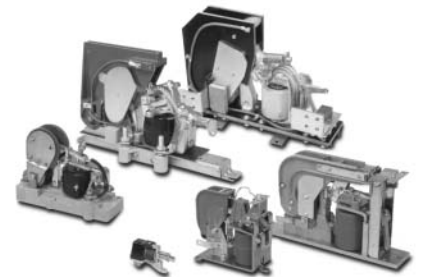
<i>Description</i>	<i>Page</i>
Heavy-Duty Brakes	
Shoe Brakes — Magnetically Operated	2
Master and Limit Switches	
Type F Master Switches — GH101	22
Type C Master Switches — GH103	28
Crane Power Limit Switches	30
Heavy-Duty Control Limit Switches — Type E84	35
High Speed Limit Switches	40
Foot-Operated Limit Switches	41
Cable-Operated Limit Switches	42
Contactors and Relays	
DC Contactors	43
DC Timers — Static In-Line	66
Low Voltage Monitoring Relays	67
DC Relays	68
DC Timing Relays — 7313 VTH and 7313 CTH	78



Heavy-Duty Brakes



Master and Limit Switch Family



Contactors and Relays

Product Description

The Type C Master Switch is a cam operated control circuit master switch, six circuit maximum, which can be supplied a NEMA 1 sheet steel enclosure, or open type for benchboard mounting. Cams are directly driven by the operating handle. Switches with "universal" cams have "daisy petal" twist offs which can be broken away to obtain any desired operating sequence.

Standards and Certifications

- NEMA ICS3-442.14.
- CMAA 70-5.7.

Technical Data and Specifications

- Voltage: 250 V maximum.
- Current Rating:
 - .6 amperes at 250 Vdc, inductive
 - 5.0 amperes at 115 Vac
- Circuits:
 - 3 or 6 circuit maximum versions
- Manual Operation.
- Speed Points:
 - Up to 3 in each direction, cams field adjustable

Options

Table 45. Options

Description	Adder *
Spring return to OFF position Non-reverse operation Three-speed reversing on six-circuit switch Special cam arrangement Special legend plate	

Renewal Parts

Table 46. Type C Master Switch

Description	Part Number
3-Circuit Contact Block ①	83-530-3

① For 6-circuit switches order qty. 2.

Note: For prices, refer to Eaton's parts distributor or call factory.

Dimensions

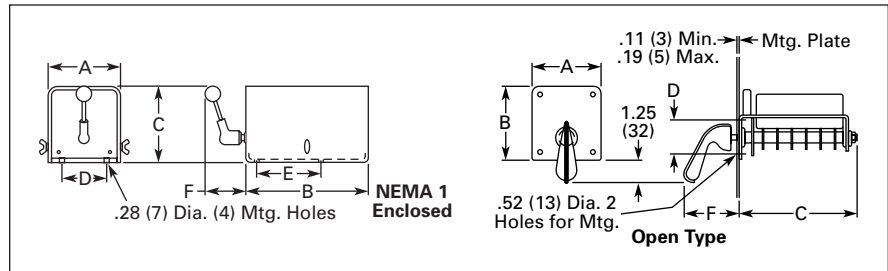


Figure 14. Approximate Dimensions in Inches (mm)

Table 47. Approximate Dimensions and Shipping Weights

Number of Circuits	Dimensions in Inches (mm)					Ship. Wt. Lbs. (kg)	
	Wide A	High B	Deep C	Mounting			
				D	E	Handle F	
Open Type							
3	4.19 (106)	4.5 (114)	4.5 (114)	2.13 (54)	—	2.56 (65)	6 (2.7)
6	4.19 (106)	4.5 (114)	7.13 (181)	2.13 (54)	—	2.56 (65)	8 (3.6)
NEMA 1 Enclosed							
3 or 6	5.47 (139)	8 (203)	4.78 (121)	2.75 (70)	4.38 (111)	2.63 (67)	11 (5)

Diagrams

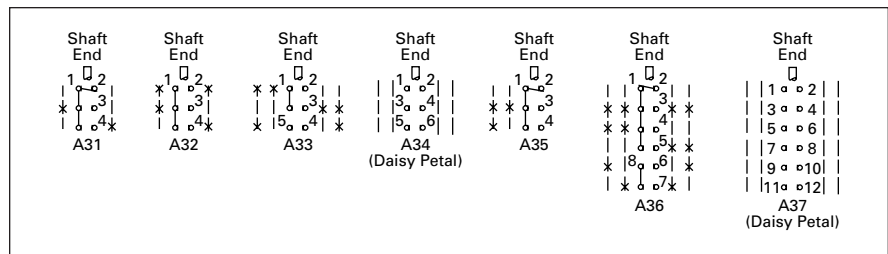


Figure 15. Contact Closure Sequence

Discount Symbol 18CD-2

* Consult Sales Office for Pricing

Product Selection

When Ordering Specify

- Complete GH101 Catalog Number, *OR*
- Complete description of master switch, including each contact closure sequence, *OR*
- Reference to previous Cutler-Hammer Catalog Number or factory serial number.

Table 48. Type C Master Switch Product Selection

Number of Speeds Each Direction	Number of Circuits	Open Type		Enclosed	
		Catalog Number	*	NEMA 1	
				Catalog Number	*
1	3	GH103HB111A31		GH103DA111A31	
1	3	GH103HB111A32		GH103DA111A32	
2	3	GH103HB121A33		GH103DA121A33	
2	3	GH103HB121A34		GH103DA121A34	
2 (NR)	3	GH103HB141A35		GH103DA141A35	
2	6	GH103GB121A36		GH103CA121A36	
2	6	GH103GB121A37		GH103CA121A37	

Note: See contact closure sequence in **Figure 15** on **Page 28**.

Cross-Reference to Previous Products

Table 49. Type C Master Switch Cross-Reference to Previous Products

Open Type	
Old	New
14951N3	GH103HB111A31
14951N4	GH103HB111A32
14951N5	GH103HB121A33
14951N6	GH103HB121A34
14951N7	GH103HB141C35
14951N8	GH103GB121A36
14951N9	GH103GB121A37