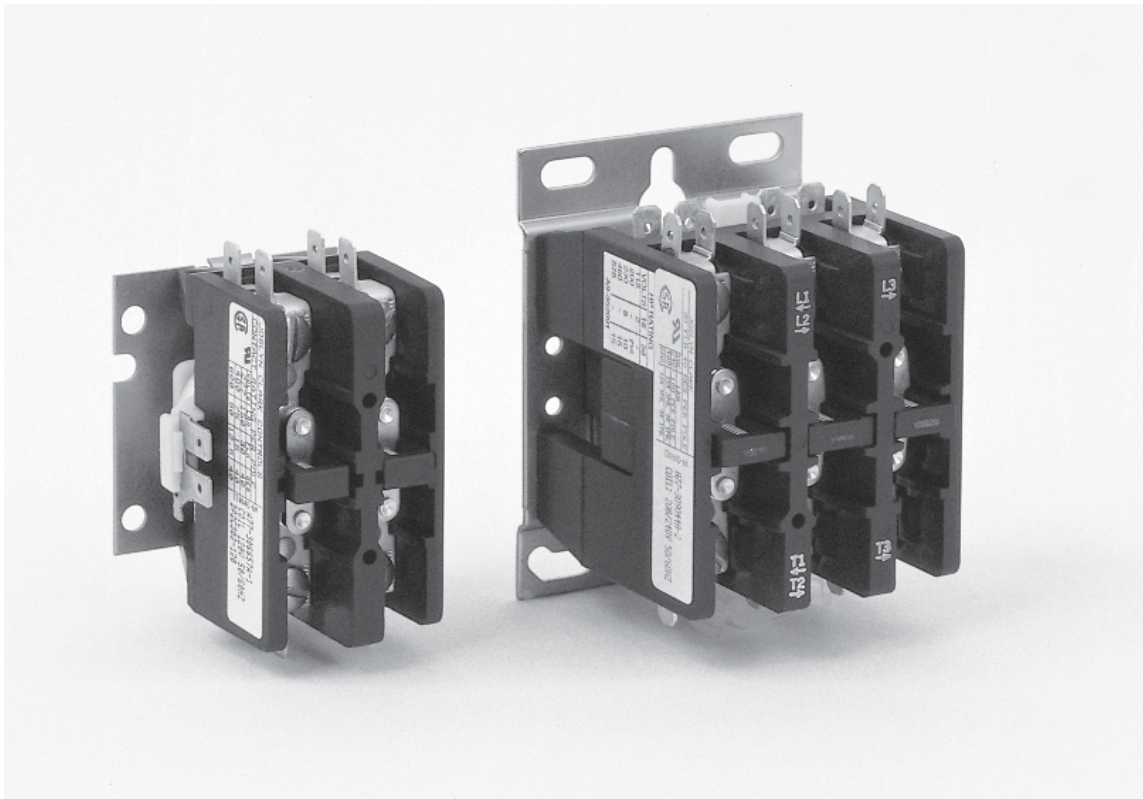


| Description | Page Number |
|---|-------------|
| General Application and Features | H2 |
| 2 Pole AC Contactors - Type DP2 | H3 |
| 2, 3 and 4 Pole Contactors - Type DP3 and DP5 | H3 |
| Two 3 Pole Contactors Mechanically and Electrically Interlocked - Type DP33 | H4 |
| Modifications and Parts | H5 |
| Engineering Data | H6 |

H



4
1
0



H

Application

Definite Purpose Contactors are intended for use in applications where the control requirements are well defined. They are not recommended for general industrial use.

As a magnetic motor controller, they are inductively rated for both maximum continuous current and maximum locked rotor current. Resistive ratings apply to resistive heating applications only.

Joslyn Clark definite purpose contactors have been specifically designed for use with air conditioning, heating and refrigeration control equipment. They are suitable for other non cycling duty applications requiring reliable low cost switching.

Low Coil Inrush and Sealed VA

Provides maximum efficiency, permitting potential cost savings on transformer requirements. This efficient magnet system assures clean pick-up and drop-out without chattering when subjected to slowly rising and slowly decreasing voltages.

Versatile Operating Positions

Joslyn Clark 2 pole contactors are designed to operate effectively in the vertical, horizontal or tabletop mounting positions. This gives design engineers maximum versatility for designing low cost systems.

Interchangeable

Along with being compact in size, the mounting plate is designed to facilitate proper alignment and interchangeability with practically all competitive 2 pole contactors. Also, the low v-a permits direct interchangeability without requiring a transformer change.

Terminals

As an optional feature, Joslyn Clark contactors can be supplied with pressure clamp terminals which are UL Recognized for field connections of #14 through #8 copper wire. They may also be supplied with box lugs for #4 through #14 Al/ Cu wire.

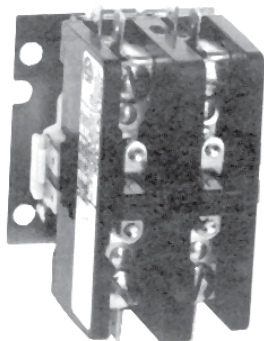
Up To 600 Volts A-C Rating

The 2 pole contactors have been designed with the customer in mind. They provide clearance between terminals permitting total utilization of all quick connects without requiring special insulation between terminals on equipment rated up to 600 volts.

4
1
0



2 Pole Contactors - Type DP2

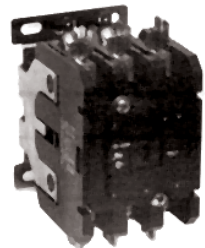


| 20, 25 and 30 Ampere (Discount Schedule JC54) | | | | | | | | |
|---|--------------|------|------|---------|--------------|--------------------------|-----------------------------|--------|
| Type | Amp. Ratings | | LRA | Volts | Model Number | Catalog Number | Price | |
| | FLA | Res | | | | | | |
| DP2 | 20 | 30 | 100 | 240/277 | DP2C202- * | A77-306680A- * | \$ 31.00. | |
| | 10 | 25 | 50 | 480 | | | | |
| | 10 | 25 | 50 | 600 | | | | |
| | 25 | 30 | 30 | 125 | 240/277 | DP2C252- * | A77-306658A- * | 39.00. |
| | | 10 | 25 | 50 | 480 | | | |
| | | 10 | 25 | 50 | 600 | | | |
| | 25 | 35 | 35 | 150 | 240/277 | DP2HC252- ¹ * | A77-306660A- ¹ * | 41.00 |
| | | 21 | 35 | 125 | 480 | | | |
| | | 17 | 35 | 100 | 600 | | | |
| | 30 | 40 | 40 | 150 | 240/277 | DP2C302- ¹ * | A77-306657A- ¹ * | 43.00 |
| | | 15 | 40 | 75 | 480 | | | |
| | | 12.5 | 40 | 60 | 600 | | | |
| ---- | 50 | ---- | ---- | 600 | DP2HC302- * | A77-306657A-5 * | 46.00. | |

2, 3 & 4 Pole Contactors - Type DP3



| 25, 30 & 40 Amp. (Discount Schedule JC54) | | | | | | | | | |
|---|-------------|-----|--------------------|------|------|------------------------|------------------------------|-----------------------------|--------|
| Type | Amp. Rating | | Locked Rotor Amps. | | | Poles | Model Number | Catalog Number | Price |
| | FLA | Res | 240V | 480V | 600V | | | | |
| DP3 | 25 | 30 | 150 | 125 | 100 | 2 | DP3C252- * | A77-309039A- * | 49.00. |
| | | | | | | 3 | DP3C253- * | A77-309040A- * | 52.00. |
| | | | | | | 4 | DP3C254- * | A77-309026A- * | 67.00. |
| | 25 | 35 | 150 | 125 | 100 | 2 | DP3HC252- * | A77-309041A- * | 52.00. |
| | | | | | | 3 | DP3HC253- * | A77-309042A- * | 56.00. |
| | | | | | | 4 | DP3C302- * | A77-309043A- * | 56.00. |
| | 30 | 40 | 180 | 150 | 120 | 3 | DP3C303- * | A77-309044A- * | 61.00. |
| | | | | | | 4 | DP3C304- * | A77-309027A- * | 76.00. |
| | | | | | | - | 50 | - | - |
| | 40 | 50 | 240 | 200 | 160 | 2 | DP3C402- [†] | A77-309045A- ¹ * | 68.00. |
| | | | | | | 3 | DP3C403- [†] | A77-309046A- ¹ * | 76.00. |
| | | | | | | 4 | DP3C404- ¹ | A77-309028A- ¹ | 92.00. |
| 50 | | | | | 3 | DP3LC503- [‡] | A77-309046A-15* ¹ | 90.00. | |



2 & 3 Pole Contactors - Type DP5

| 50 and 60 Amp. (Discount Schedule JC50) | | | | | | | | | |
|---|-------------|-----|--------------------|------|------|-------|--------------|----------------|-------|
| Type | Amp. Rating | | Locked Rotor Amps. | | | Poles | Model Number | Catalog Number | Price |
| | FLA | Res | 240V | 480V | 600V | | | | |
| DP5 | 50 | 65 | 300 | 250 | 200 | 2 | DP5C502- * | DP5C502- * | 259. |
| | | | | | | 3 | DP5C503- * | DP5C503- * | 284. |
| | 60 | 75 | 360 | 300 | 240 | 2 | DP5C602- * | DP5C602- * | 288. |
| | | | | | | 3 | DP5C603- * | DP5C603- * | 320. |

Ordering Information

● Use complete catalog number. Replace the (*) with a suffix from the Coil Table.

Example:

DP3C303-24 (A77-309044A-3) is a 3 pole 30 ampere, contactor with a 24 Volt, 50/60 Hz Coil.

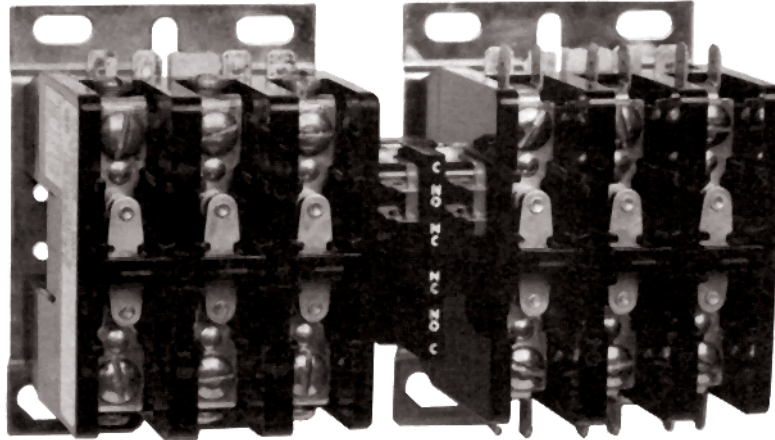
● Engineering Data- Page H6
● Modification Data- Page H5

Note:

1- comes with cover

Coil Table

| 50/ 60Hz Voltage | Model No. Suffix | Cat.No. Suffix | | |
|------------------|------------------|----------------|---------|------|
| | | DP3 | DP2 | DP5 |
| 120 | -120 | 1 | 1 | 120. |
| 208-240 | -240 | 2 | 2 | 240. |
| 24 | -24 | 3 | 3 | 24. |
| 277 | -277 | Factory | Factory | 277. |
| 480 | -480 | Factory | Factory | 480. |



Reversing Contactors - Mechanically & Electrically Interlocked Type DP33 - Bulletin 7735

25, 30 & 40 Amp.

| Type | Current Ratings | | | | | Maximum 3 Phase Horsepower Ratings | | | | | | Model No. | Catalog No. | No. of Aux. Contacts | Price |
|------|-----------------|------|--------------------|------|------|------------------------------------|-------|----------|--------------|-------|----------|------------|---------------|----------------------|--------------------|
| | Amp. Rating | | Locked Rotor Amps. | | | General Duty | | | Jogging Duty | | | | | | |
| | Ind. | Res. | 240V | 480V | 600V | 200V | 240V | 460/575V | 200V | 240V | 460/575V | | | | |
| DP33 | 25 | 30 | 150 | 125 | 100 | 5 | 7 1/2 | 15 | 3 | 3 | 7 1/2 | DP33C253-* | A77-350735A-* | 2 4 | \$421.00 494.00 |
| | 30 | 40 | 180 | 150 | 120 | 7 1/2 | 10 | 15 | 5 | 5 | 7 1/2 | DP33C303-* | A77-350737A-* | 2 4 | 470.00 543.00 |
| | 40 | 50 | 240 | 200 | 160 | 10 | 10 | 25 | 5 | 7 1/2 | 15 | DP33C403-* | A77-352100A-* | 2 4 | 527.00 599.00 |

Mechanically and electrically interlocked contactors for low cost motor reversing applications such as hoists, doors, gates, etc.. Standard assembly includes mechanical interlock with two SPDT auxiliary contacts for electrical interlocking. Four additional auxiliary contacts may be factory added. Two may be field added.

Use jogging duty rating on full-voltage magnetic controllers for plug-stop, plug-reverse and jogging duty regarding repeated interruption of stalled motor current or repeated closing of high transient currents encountered in rapid motor reversal beyond five openings or closings per minute or more than ten in a ten minute period.

Approvals

Underwriters Laboratories, Inc. recognized component for air conditioning, refrigeration and resistance heating equipment. File number E6591, Section 27. Guide number NLDX2.

Canadian Standards Associations (CSA) Guide 361-E-0.2 Class 1222 File 18156-55

4
2
2

Ordering Information

- Use complete catalog number. Replace the (*) with the suffix from the coil table.

Example: DP33C253-120 (A77-350735A-1) is a 3 Phase, 25 amp., reversing contactor with 120V, 50/60 HZ coil and SPDT auxiliary.

- Engineering Data Page H6.
- Modification Page H5.

Coil Table

| 50/60Hz Voltage | Model No. | | Cat. No. | |
|-----------------|-----------|--------|----------|--------|
| | 2 Aux. | 4 Aux. | 2 Aux. | 4 Aux. |
| 120 | 120 | 120CC | 1 | 4 |
| 208-240 | 240 | 240CC | 2 | 5 |
| 24 | 24 | 24CC | 3 | 6 |
| 480 | 480 | 480CC | | |

Modifications and Parts Definite Purpose Contactors-DP

Types DP2, DP3, DP5, DP, DP33, and DP3S Accessories & Parts Kits Discount Schedule JC50²

| Description | Type DP2 20, 25 & 30 Ampere | | Type DP3, DP33 25, 30, & 40 Ampere | | Type DP5 50 & 60 Ampere | |
|---|--------------------------------|---------|---------------------------------------|----------|----------------------------|---------|
| | Catalog Number | Price | Catalog Number | Price | Catalog Number | Price |
| SPDT Auxiliary Contact Kit | ---- | | KHP-C ² | \$ 39.00 | ---- | |
| N.O. Auxiliary Contact Kit | ---- | | ---- | --- | KDP5-10 | \$41.00 |
| N.O. & N.C. Auxiliary Contact Kit | ---- | | ---- | | KDP5-11 | 61.00 |
| Contact Cover | A77-356577A-1 | \$ 4.00 | A77-356577A-2 | 4.00 | | |
| Pressure (Box) Lug Kit (Contains 3 Lugs) | A77-352648A | 7.00 | A77-352648A | 7.00 | | |

Replacement Coil Kits

Discount Schedule JC53

| Description | Type DP3, DP33 25, 30 & 40 Ampere | | Type DP5 50 & 60 Ampere | |
|-------------------|--------------------------------------|----------|----------------------------|----------|
| | Catalog Number | Price | Catalog Number | Price |
| 120V, 50/60Hz | KTB170-1 | \$ 48.00 | CDP5-120 | \$ 97.00 |
| 208-240V, 50/60Hz | KTB170-2 | 48.00 | CDP5-240 | 97.00 |
| 24V, 50/60Hz | KTB170-3 | 48.00 | CDP5-24 | 97.00 |
| 277V, 50/60Hz | KTB170-4 | 48.00 | CDP5-277 | 97.00 |
| 480V, 50/60Hz | KTB170-5 | 48.00 | CDP5-480 | 97.00 |
| 600V, 60Hz | KTB170-6 | 48.00 | CDP5-600 | 97.00 |

Field Modifications¹

| | Cat. No. | Price | Discount Schedule |
|----------------------|----------|-------|-------------------|
| Type 1 Enclosure Kit | P6E-01 | \$80. | JC14 |

Notes:

1. Additional modifications may be selected from NEMA HP Section C page C7
2. JC12 Discount Schedule for KHP-C.

2 Pole Contactors, Type DP2

| Coil Volts 50/60Hz | Max. Inrush VA | Max. Sealed VA | Pick-up Volts | D-C Resistance Ohms |
|-----------------------|-------------------|-------------------|------------------|---------------------------|
| 24 | 31 | 7 | 18 | 11 |
| 120 | 31 | 7 | 90 | 290 |
| 208-240 | 31 | 7 | 176 | 1173 |

Coil insulation - Class B
Coil connections - Double male 1/4" quick connect
Maximum ambient - 155°F

Dimensions (Approximate)

3 & 4 Pole Contactors - Type DP3

| Coil Volts 50/60Hz | Inrush VA | Sealed VA | Pick-up Volts | D-C Resistance Ohms |
|-----------------------|--------------|--------------|------------------|---------------------------|
| 24 | 48 | 8.4 | 16 | 6.5 |
| 120 | 48 | 8.4 | 80 | 170 |
| 208-240 | 48 | 8.4 | 160 | 680 |

Dimensions (Approximate)

3 Pole Contactor - Type DP5

Coil Characteristics
Inrush VA 204
Sealed VA 36.5

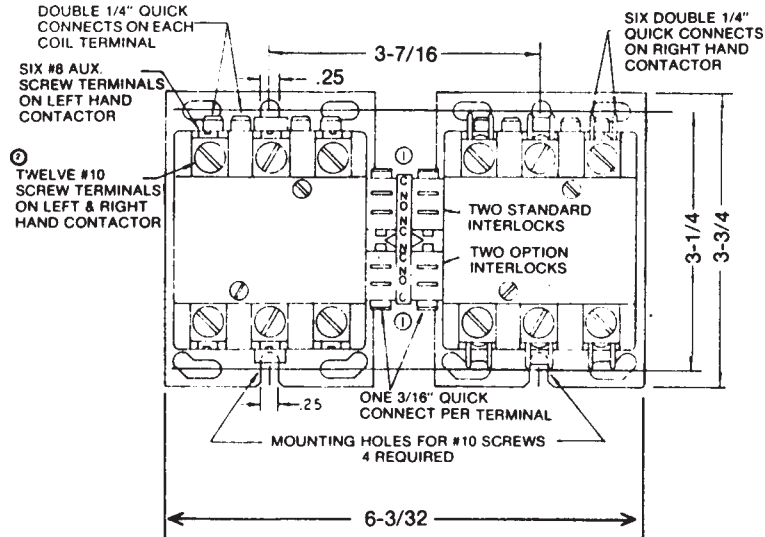
Dimensions (Approximate)

Approvals

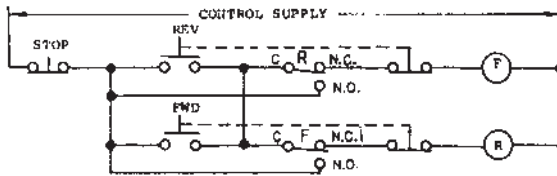
Underwriters Laboratories, Inc. recognized component for air conditioning, refrigeration, and resistance heating equipment. File Number #E6591. Guide Number NLDX2.

Canadian Standards Associations (CSA) Guide Number 361-E0.2, File Number LX18156-39.

Dimension - DP33 (Two 3-Pole Mechanically & Electrically Interlock Contactors)



Typical wiring diagram for Electrically held Reverser using Mechanically Interlocked Push Buttons.



Electrically Held Contactors and Mechanically Interlocked Pushbuttons Using Two SPDT Auxiliary Contacts.

Four additional auxiliary contacts may be factory added. Two may be field added.

Coil Characteristics

| Coil Volts 50/60Hz | Inrush VA | Sealed VA | Pick-up Volts | D-C Resistance Ohms |
|--------------------|-----------|-----------|---------------|---------------------|
| 24 | 48 | 8.4 | 16 | 6.5 |
| 120 | 48 | 8.4 | 80 | 170 |
| 208-240 | 48 | 8.4 | 160 | 680 |

Coil insulation - Class B
 Coil connections - Double male 1/4" quick connect
 Maximum ambient - 155°F

Approvals

Underwriters Laboratories, Inc. recognized component for air conditioning, refrigeration and resistance heating equipment. File number E6591. Guide number NLDX2.

Canadian Standard Association (CSA) Guide number 361-E0.2, File number LX18156-39.